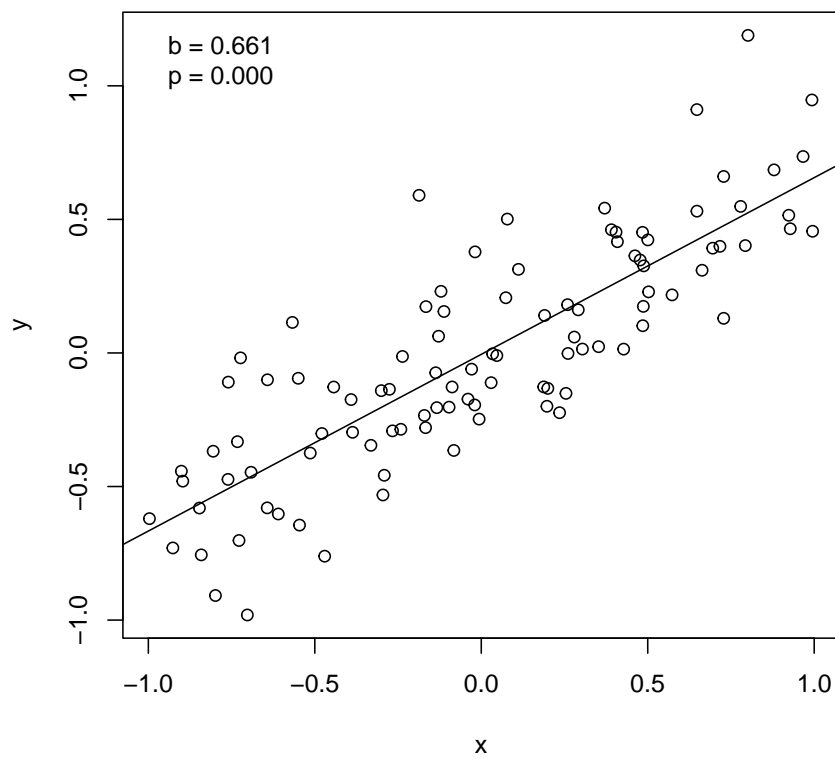


1. Problem

Using the data provided in `regression.csv` estimate a linear regression of y on x and answer the following questions.

- (a) x and y are not significantly correlated / y increases significantly with x / y decreases significantly with x
- (b) Estimated slope with respect to x :

Solution



To replicate the analysis in R:

```
## data
d <- read.csv("regression.csv")
## regression
m <- lm(y ~ x, data = d)
summary(m)
## visualization
plot(y ~ x, data = d)
abline(m)
```